

User Manual

Car OEM Wired CarPlay to Wireless CarPlay

Product function introduction

- ◆ Change the original wired CarPlay connection method, say goodbye to data cable connection, wireless transmission brings a more convenient connection experience. When you use Apple CarPlay, it will automatically connected when you enter the car.

Product specification parameters

- ◆ Power input: 5V $\overline{\text{---}}$ 1A Power output: 5V $\overline{\text{---}}$ 1A
- ◆ Product power consumption: 0.75W
- ◆ Adaptive Resolution: Adaptive.

Compatible car model and phone

- ◆ Compatible car models query:
<https://www.apple.com/ios/carplay/available-models/>

Support iPhone6 and above systems, suitable for iOS 10 version and above.

Compatible Iphone models : <https://www.apple.com.cn/>

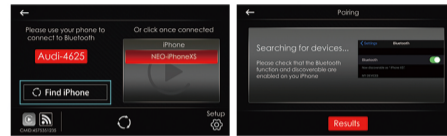
Product connection method

- ◆ Connect the dongle to the Car head unit USB port
The iPhone is wirelessly connected.

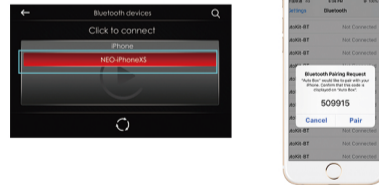


iPhone connection (Wireless Bluetooth)

1. Connect the USB dongle to the car's USB port, click Search, and turn on the iPhone Bluetooth & Wifi



2. Click the iPhone Bluetooth signal appears on the car screen, pair and connect on the iPhone bluetooth interface, and then start to use wireless Apple CarPlay.

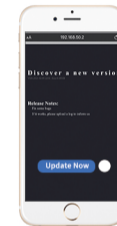


Note: If the above method does not connect successfully. You can turn on iPhone Bluetooth & Wifi search for the Bluetooth signal displayed on the car screen, and click it to connect.

Online upgrade instruction

The iPhone Wifi connect to dongle Wifi, and scan this QR code with iPhone camera, or input 192.168.50.2 in the iPhone browser.

Note: It must be the iPhone , and the iPhone can connect to the network.



1. You can check if it is the latest version.
2. The latest version can be updated online
(If the product can be used normally, there is no need to update the version)

List management



1. Bluetooth connect: click your iPhone's name
2. Delete the pair : long press your iPhone's name

Description of log upload function

1. Insert the product into the vehicle navigation machine, and the mobile phone searches and connects to the product box's WiFi signal.
2. Enter 192.168.50.2 in iPhone "Safari" browser and enter the following web page.
3. Click the white circle button to enter the "Setting" interface, and select "Feedback".
4. Enter the car brand, model and year, and describe the product usage problem you encountered.
5. Save a screenshot of this "Feedback" page and send it to Carlinkit's customer service, then select Submit, and there will be technical follow-up cases.

